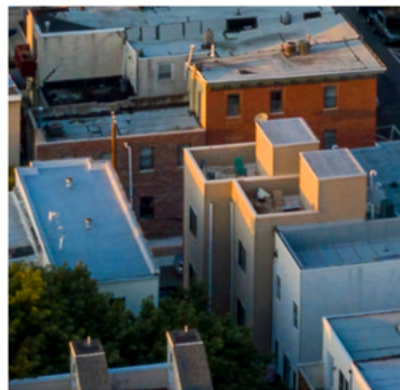


# PHILADELPHIA FOUNDATION



## *2026 Grantmaking Overview*



### ABOUT PHILADELPHIA FOUNDATION

Philadelphia Foundation is one of the country's first publicly supported community foundations and the largest devoted to improving lives in Greater Philadelphia. For over a century, community members, civic and business sector leaders, and nonprofit organizations have turned to us for partnership and collaboration in responding to community needs and creating opportunities for impact.

# OUR STRATEGY

Our Board of Managers has made a long-term, strategic commitment to economic mobility, driven in part by data that ranks Greater Philadelphia last among major metros in economic mobility. We are moving toward deeper, longer-term partnerships with workforce development providers who demonstrate strong outcomes and deep community trust, with the goal of building a more connected workforce and opportunity ecosystem across the region. Our longstanding support for strong, direct service organizations will remain, prioritizing gaps in direct services to those whose safety and wellbeing are at greatest risk.

## 2026 GRANTMAKING

**Philadelphia Foundation's 2026 grantmaking is organized into three areas:**

### 1) Pathways to Opportunity

- Focused on young adult workforce development providers with strong employer partnerships and demonstrated outcomes. Grants will be made in the following areas:
  - **High-Quality Workforce Development Training Providers and Bridge Programs**
    - Expand access to family-sustaining careers for young adults
    - Invest in additional capacity for employer-aligned, high-quality training and bridge programs for young adults
  - **Workforce Ecosystem Coordination and Scaling**
    - Increase the scale of quality providers by strengthening coordination across talent-industry pipelines
    - Support coalitions and networks that link employer demand to talent supply and coordination across multiple providers

### 2) Essential Community Supports

- Focused on upholding the health, safety, and wellbeing of marginalized, low-income communities in Greater Philadelphia and prioritizing gaps in direct services to those whose safety and wellbeing are at greatest risk. Funding opportunities are also available for arts organizations that create ways for residents to experience creativity, connection, and inspiration, and for youth-serving organizations that provide out-of-school-time (OST) programs. Grants will be made in the following areas:
- **Support for Strong, Direct Service Organizations**
  - Provide direct services to marginalized and/or vulnerable populations
  - Are organizationally sound and collect service delivery and impact data
- **Arts Engagement and Access**
  - Funding to increase access to the arts and creative experiences and strengthen the resilience of existing cultural and artistic assets. Priority will be given to community-based organizations and cultural institutions that:
    - Deliver performing arts programming
    - Serve children, youth, and families through arts programming
    - Preserve and maintain public art
    - Expand access to the arts through community-based models
    - Are led by instructors and leaders who understand and address barriers to participation through cultural responsiveness and lived experience
- **Fund for Children**
  - Support for Philadelphia-based organizations whose missions prioritize youth leadership, civic engagement, and youth organizing in out-of-school-time (OST) settings

### 3) Special Initiatives

- Philadelphia Foundation manages grant programs for partner organizations and funders. Special Initiatives have their own eligibility criteria and accept applications on a rolling basis throughout the year. Some 2026 special initiatives include:
  - **District Attorney's Office Forfeiture Fund:** Pursuant to its obligations under the PA Controlled Substances Forfeiture Act, the DAO utilizes funds forfeited to it to support community-based organizations. New cycles open Summer and Fall 2026.
  - **Forman Family Fund:** Supports Greater Philadelphia nonprofits serving young people aged 11–18 offering in-school or out-of-school-time programs in photography, architectural drawing and architecture, or the written arts. Application opens Summer 2026.
  - **GSK IMPACT Awards:** Annually honors up to 10 Greater Philadelphia nonprofit organizations in recognition of their exceptional achievements, overall excellence, and best practices in contributing to a healthier community. Application opens Summer 2026.
  - **Henrietta Tower Wurts Memorial:** A charitable foundation formed to carry out the wishes of Henrietta Tower Wurts (deceased). Supports nonprofits serving children and youth and/or the elderly in Philadelphia. Application opens Summer 2026.

*Note: This is not an exhaustive list of Special Initiatives. Please visit our website for the most up-to-date information.*

## DONOR ADVISED FUNDS

### Donor Advised Fund (DAF) Grantmaking

- In addition to those grantmaking opportunities, Philadelphia Foundation also manages Donor Advised Funds.
  - DAFs are charitable assets stewarded by Philadelphia Foundation on behalf of families, individuals, or organizations. Donors decide where the money goes. PF staff help connect donors and nonprofits by sharing information about nonprofits' missions and programs.
  - There is no formal application process for DAF funding. However, organizations may share information about their work with PF by submitting a DAF form to [grantmakingservices@philafound.org](mailto:grantmakingservices@philafound.org) for potential consideration by donors.

# HOW IT WORKS

## How It Works

- Organizations should visit [app.smarterselect.com/matching/1771/start\\_page](http://app.smarterselect.com/matching/1771/start_page) to access our portal and complete a brief prequalification screening.
- The screener asks basic eligibility questions and then routes organizations to the appropriate Request for Information (RFI) for either Pathways to Opportunity or Essential Community Supports
- Organizations may respond to only one RFI — either Pathways to Opportunity or Essential Community Supports
- Through the RFI, organizations will share program information so we can understand their work and assess alignment with our grant offerings
- Based on RFI responses, some organizations will be invited to respond to a Request for Proposal (RFP)
- RFP responses will be reviewed on a rolling basis
- As in prior years, organizations may apply to one grant program per calendar year and may also apply to any Special Initiative funding opportunity for which they are eligible

## Which RFI should my organization complete?

- If your organization is a nonprofit workforce development training provider with strong employer partnerships and demonstrated outcomes, you should fill out the Pathways to Opportunity RFI
- If your organization does not fit the above description, you should fill out the Essential Community Supports RFI
- If you have technical difficulties completing the RFI, please contact [grantmakingservices@philafound.org](mailto:grantmakingservices@philafound.org)

## Important Dates

- **April 23:** RFI opened
- **June 5:** RFI closes
- **April through September:** RFIs reviewed on a rolling basis, with select organizations invited to respond to an RFP
- **September 30:** Deadline for organizations invited to submit an RFP
- **Funding disbursement:** June, September, and November
- **Special Initiatives:** Visit website for current opportunities

# ELIGIBILITY

## General Eligibility

- Must be a 501(c)3 or fiscally sponsored organization serving Greater Philadelphia (Bucks, Chester, Delaware, Montgomery, & Philadelphia counties in PA and Burlington & Camden counties in NJ)
- If fiscally sponsored by a 501(c)3 nonprofit, applicant must have an advisory Board separate from its fiscal sponsor's Board
- Must employ at least one full-time equivalent staff person
- Organizations that serve historically marginalized and under-invested communities
- Statewide or national organizations must demonstrate at least 75% of budget raised locally and have an advisory board in the service area
- Cannot have deficits greater than 10% of operating budget in the past year

## Fund for Children Eligibility

- Supports organizations that serve children and youth ages 0–18 years
- Programs must be based in Philadelphia and working with children and youth from the City of Philadelphia
- Generally, the Fund for Children does not fund schools (public, private, or charters)
- OST providers offering in-school activities (before, during, or afterschool) are eligible
- 70% of the children and youth served are living in the lowest income communities and most under-resourced neighborhoods in Philadelphia

## Key Considerations

- Organizations must demonstrate that they are serving marginalized communities, families living in poverty, or other vulnerable conditions
- Organizations operating less than three years must provide an executive summary of a board-approved strategic plan and, if available, the organization's theory of change
- Generally, Philadelphia Foundation does not use competitive dollars to support organizations where there are familial relationships across the board and staff

## Ineligible Organizations

- Not located in the service area or serving a constituent base outside of the geographic areas (Bucks, Chester, Delaware, Montgomery & Philadelphia counties in PA, and Burlington & Camden counties in NJ)
- Cemeteries
- Schools (K–12)
- General childcare agencies
- Government agencies
- Libraries
- Programs housed in universities raising less than 75% of their own funding
- Local chapters of national organizations raising less than 75% of their own funding

# RESOURCES

Philadelphia Foundation provides access to the following resources for nonprofits:

## Catchafire

- Philadelphia Foundation provides access to Catchafire, a platform that connects Greater Philadelphia nonprofits to free support from a broad range of skills-based volunteer professionals. If your organization is interested in getting access to the platform at no cost (under the sponsorship of Philadelphia Foundation), contact [grantmakingservices@philafound.org](mailto:grantmakingservices@philafound.org).

## Pennsylvania Association of Nonprofit Organizations (PANO)

- Philadelphia Foundation offers a limited number of free memberships to PANO, a statewide organization that supports PA nonprofits through training, advocacy, and capacity-building resources. Membership benefits include:
  - Discounted trainings
  - Free resource packets
  - Access to the AskPANO nonprofit helpdesk
  - Advocacy support
  - Connections to vetted consultants to help organizations grow

# QUESTIONS

Submit additional questions to [grantmakingservices@philafound.org](mailto:grantmakingservices@philafound.org) or visit [philafound.org/nonprofits/available-grants/](https://philafound.org/nonprofits/available-grants/) for the most up-to-date information on available grants, the Request for Information (RFI), and FAQs about our 2026 grantmaking approach.